



## ROCKET LOCKER SIDE RAILS INSTALLATION INSTRUCTION FOR

Congratulations on your purchase of a high quality PUTCO product. Should you need any application or technical assistance feel free to call us at:

1-800-247-3974

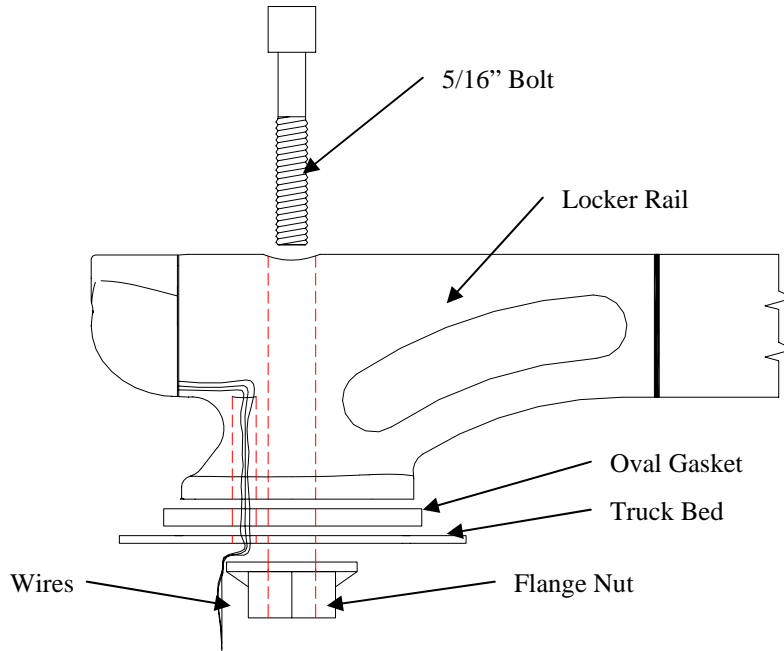
Monday-Friday 8:00 a.m. - 5:00 p.m. (Central Standard Time)

Contact your PUTCO dealer for other quality accessories.

PUTCO Inc. - 216 West First Street - Story City, Iowa 50248

**NOTE: THE PICTURES IN THIS INSTRUCTION ARE FOR DEMONSTRATION PURPOSES ONLY AND MAY NOT SHOW YOUR VEHICLE.**

**PLEASE READ ALL INSTRUCTIONS BEFORE BEGINNING INSTALLATION AND BE SURE TO CHECK TO SEE THAT ALL PARTS AND HARDWARE ARE INCLUDED.**



**NOTE:** Upon receipt of the Rocket Locker, the casting and the light should already be assembled and wires should be fed thru casting.

**Step 1:** Feed wires thru hole in the oval gasket.

**Step 2:** Install Allen head bolts through the hole in Rocket Locker casting, plastic oval gasket, and rubber expander.

**Step 3:** Install threaded back plate on Allen head bolt. Snugly tighten the back plate against the rubber expander.

**Step 4:** Remove the tail light lens. To do this, open tailgate and remove the screws that hold the lens in place (refer to picture below). If you are not sure which screws hold the lens in place refer to your owner's manual on how to replace tail light bulbs. Then release the tabs on the other side of the lens.



**Step 5:** Set your tail light on a secure place such as the tailgate be careful not to pull too hard and rip the wires apart. The picture below shows the tail light lens removed from the body of the truck.



**Step 6:** Feed the wires of the Rocket Locker through an opening between the stake pocket hole and the tail light opening, if there is not an opening you may need to drill a hole.



**Step 7:** Install the Rocket Locker casting by inserting the back plate and rubber expander into the stake pocket hole until the black gasket sits on top of the truck bed. For trucks without stake pocket holes, you will need to drill a hole for the Allen Head bolt slightly larger than the diameter of the bolt and one for the wires, about 1/4" hole.

**Step 8:** Install the tube and other end casting. To do this, install one o-ring (tabs facing the open side) on the end of the Rocket Locker casting, slide the tube onto the Rocket Locker casting then install an o-ring onto the other casting. Slide the other end casting into the tube. Then follow Step 7 to secure the end casting on the truck box.

**Step 9:** Follow the diagram on the last page to correctly use the blue quick connects supplied with your Rocket Locker.

**Step 10:** Follow the color chart on the next page to correctly connect your Rocket Locker:

**LOCATE YOUR VEHICLE IN THE LISTINGS BELOW**

<u>Vehicle</u>	<u>Driver/Passenger</u>	<u>Rocket Wire</u>	<u>Tail Lamp Wire</u>
**1973-1998 Chevy/GMC	Passenger	Green w/ White tracer	Green
	Passenger	White w/ Brown tracer	Brown
	Passenger	Blue w/ White tracer	Black
	Driver	Green w/ White tracer	Yellow
	Driver	White w/ Brown tracer	Brown
	Driver	Blue w/ White tracer	Black
*1999-2004 Chevy/GMC	Passenger	Green w/ White tracer	Lt. Blue&Blue
	Passenger	White w/ Brown tracer	Brown w/ white tracer
	Passenger	Blue w/ White tracer	Black (from any of the bulbs)
	Driver	Green w/ White tracer	Lt. Blue&Blue
	Driver	White w/ Brown tracer	Brown (Brown w/ White tr.)
	Driver	Blue w/ White tracer	Black (from any of the bulbs)
**1980-1996 Ford F Series	Both	Green w/ White tracer	Green
		White w/ Brown tracer	Brown
		Blue w/ White tracer	Black
**97-04 F-150, 99-04 Super Duty, & 01-04 Explorer Sport Trac	Passenger	Green w/ White tracer	Orange
	Passenger	White w/ Brown tracer	Brown
	Passenger	Blue w/ White tracer	Black
	Driver	Green w/ White tracer	Green w/ Orange tracer
	Driver	White w/ Brown tracer	Brown
	Driver	Blue w/ White tracer	Black
*2002-2004 Dodge Ram 1500*	Both	Green w/ White tracer	Brown & Blue
		White w/ Brown tracer	Black w/ yellow tracer
		Blue w/ White tracer	Black
*2003-2004 Dodge Ram Heavy Duty	Passenger	Green w/ White tracer	White w/ Green tracer & Green w/ Red tracer
	Passenger	White w/ Brown tracer	Pink w/ Purple tracer
	Passenger	Blue w/ White tracer	Black
	Driver	Green w/ White tracer	Brown w/ Red tracer & Lt. Blue w/ White tracer
	Driver	White w/ Brown tracer	Black w/ Yellow tracer
	Driver	Blue w/ White tracer	Black
**94-01 Dodge Ram 1500, 94-02 Dodge Ram 2500-3500, 97-04 Dodge Dakota	Both	Green w/ White tracer	Green Wire
		White w/ Brown tracer	Black w/ Yellow tracer
		Blue w/ White tracer	Black
**86-96 Dodge Dakota	Both	Green w/ White tracer	Brown w/ Green tracer
		White w/ Brown tracer	Black w/ Yellow tracer
		Blue w/ White tracer	Grey

\* - the above vehicles marked utilize the supplied "Y" connector attached to the Green w/ White tracer wire to attach to the two (2) wires listed.

\*\* - the above vehicles marked do not utilize the supplied "Y" connector attached to the Green w/ White tracer wire, you may only use one side, or trim the "Y" connector off above the quick connect using wire cutters.

## Installation Instructions:

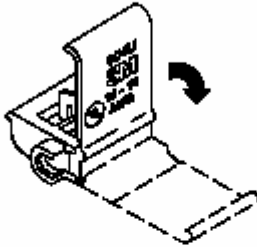


### WARNING

Turn power off before installing or removing terminal.  
All electrical work should be done according to  
appropriate electrical codes.

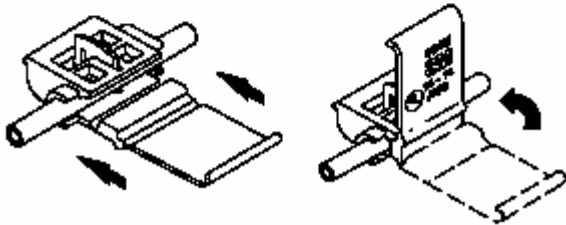
1. Open hinged side wall (*Figure 1*).

Figure 1



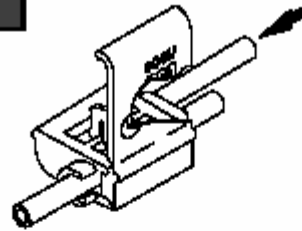
2. Place unstripped run wire inside run channel and close hinged side wall (*Figure 2*).

Figure 2



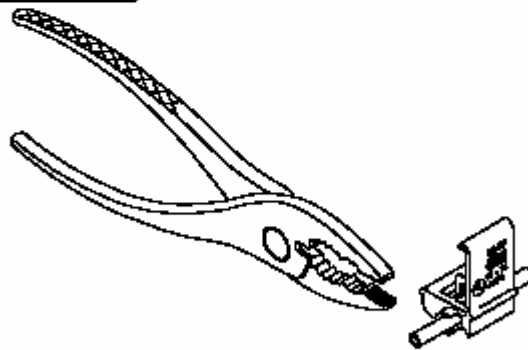
3. Insert unstripped tap wire completely into tap port (*Figure 3*).

Figure 3



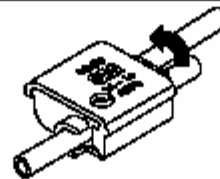
4. Hold tool perpendicular to the wire and make the connection by crimping the u-contact down flush with the top of the insulator (*Figure 4*).

Figure 4



5. Close over until latched (*Figure 5*).

Figure 5



**Note:** PUTCO recommends applying a high quality automotive wax to maintain the original appearance, help prevent water spotting and weathering on your new locker side rails.

INSTRUCTION #IN89824

### LIMITED WARRANTY

Putco guarantees its Stainless Steel and Aluminum products against defects in workmanship and material for as long as you own your vehicle. Black products have a 90 day warranty on the painted surface. Any defects resulting from faulty material or workmanship will be warranted by Putco and repaired or replaced at our discretion. Putco assumes no extra labor costs. Damages caused by freight carriers, improper installation, misuse, collision, or neglect will not be warranted by Putco.